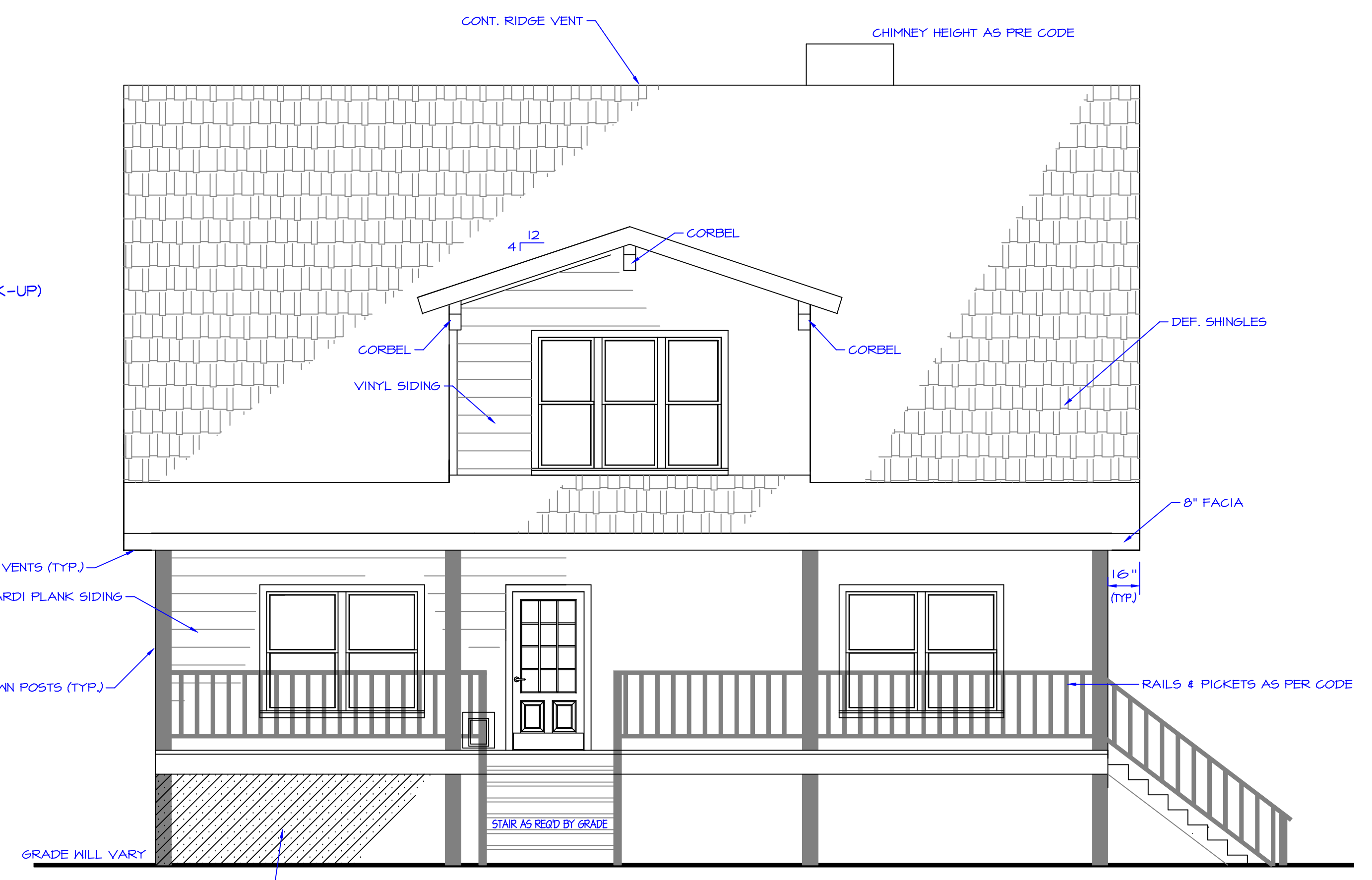
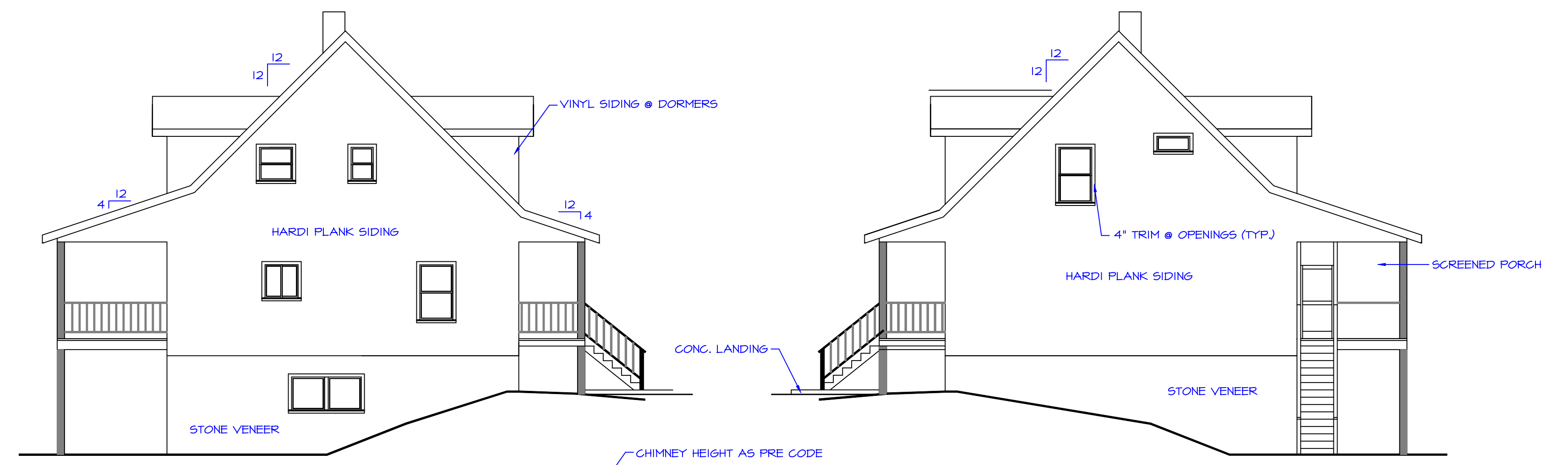


BASEMENT PLAN
SCALE: 1/4" = 1'- 0"

- LEGEND**
- ⊕ 110 WALL OUTLET
 - ⊕ G.F.I. OUTLET
 - ⊕ 220 ELEC. OUTLET
 - ⊕ 110 LIGHT SWITCH
 - ⊕ CABLE T.V. OUTLET
 - ⊕ TELEPHONE JACK
 - ⊕ ELEC. METER BASE
 - ⊕ EXTERIOR LIGHT FIXTURE
 - ⊕ CEILING MOUNT LIGHT FIXTURE
 - ⊕ HEATED & VENTED LIGHT FIXTURE
 - ⊕ RECESSED LIGHT FIXTURE
 - ⊕ SMOKE DETECTOR (BATTERY BACK-UP)
 - ⊕ TELEPHONE JACK
 - ⊕ EXTERIOR FLOOD LAMP
 - ⊕ CEILING FAN WITH LIGHT
 - ⊕ 48" 2-BULB FLUORESCENT STRIP LIGHT

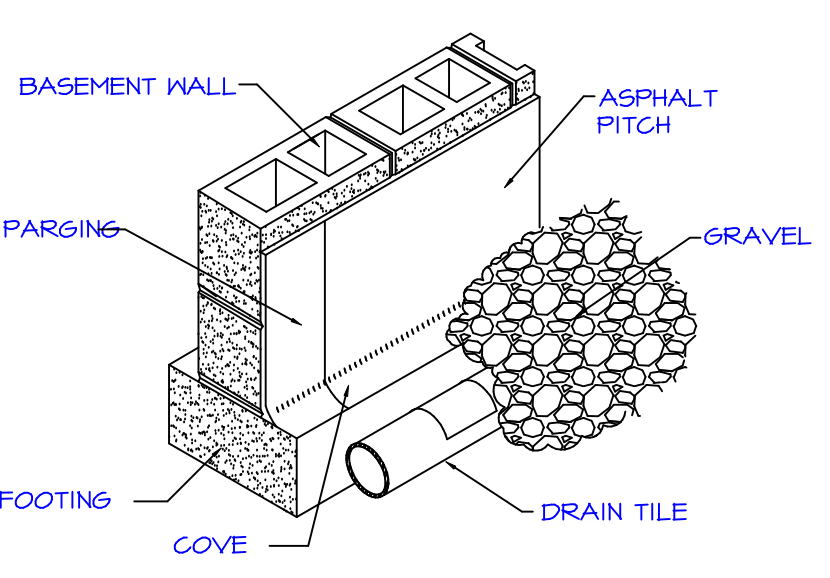


FRONT ELEVATION
SCALE: 1/4" = 1'- 0"

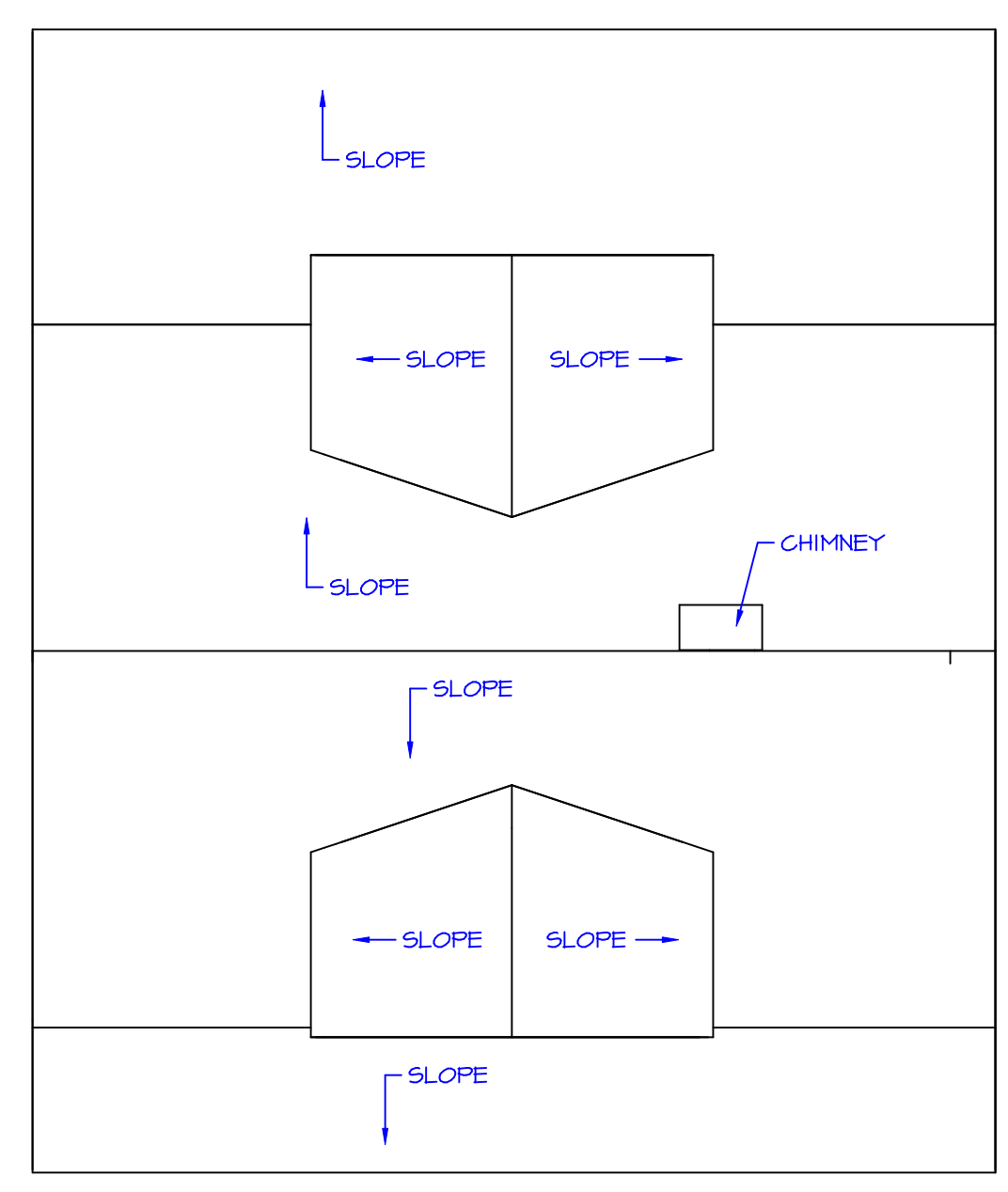


LEFT ELEVATION
SCALE: 1/8" = 1'- 0"

RIGHT ELEVATION
SCALE: 1/8" = 1'- 0"



DRAINAGE DETAIL
NOT TO SCALE



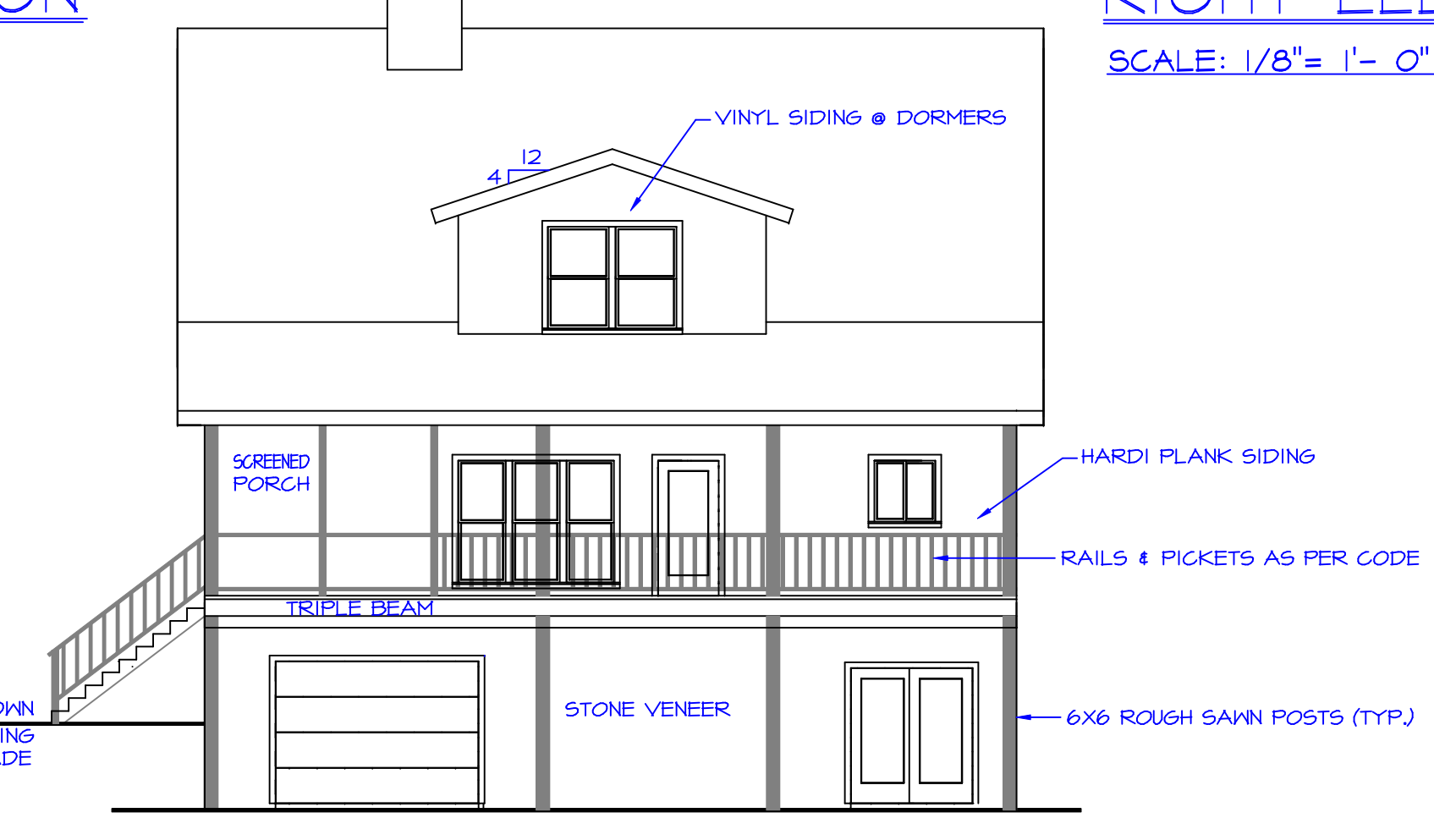
ROOF PLAN
SCALE: 1/8" = 1'- 0"

RAFTER SPANS

RAFTER SPANS FOR SOUTHERN PINE SPECIES
LIVE LOAD=30psf, L₂₋₄=240 DEAD LOAD = 10psf
CD = 1.15 (SNOY)

SIZE	SPACING (INCHES)	SPANS (MAXIMUM RAFTER SPANS BETWEEN BRACING) (FT. - IN.)
2 x 6	12.0	12-11
	16.0	11-2
	19.2	10-2
	24.0	9-2
2 x 8	12.0	16-4
	16.0	14-2
	19.2	12-11
	24.0	11-7
2 x 10	12.0	19-8
	16.0	16-10
	19.2	15-4
	24.0	13-9
2 x 12	12.0	22-10
	16.0	18-10
	19.2	16-1
	24.0	16-2

NOTES: The above tables are based on the 2013 New Design Values set forth by Southern Forest Product Association.



REAR ELEVATION
SCALE: 1/8" = 1'- 0"

- ROOF PLAN NOTES:**
1. CONTRACTOR SHALL COMPLY WITH ALL APPLICABLE CODES AT SITE.
 2. ALL RIDGE BEAMS, HIP RAFTERS, & VALLEY RAFTERS TO BE #2 2X10 SOUTHERN YELLOW PINE.
 3. ALL RAFTERS TO BE SIZED AS PER SPAN CHART.
 4. CONTRACTOR TO WATERPROOF ALL ROOF INTERSECTIONS AS PER CODE.
 5. CONTRACTOR TO VERIFY ALL ROOF PITCHES WITH EXTERIOR ELEVATIONS PRIOR TO CONSTRUCTION.
 6. CONTRACTOR TO PROVIDE ADEQUATE ROOF VENTILATION AS REQ'D. BY CURRENT CODES.